

The future of surgical training



 **LAPARO[®]**
Medical Simulators

LAPARO TRAINING PROGRAM

Laparo Training Program is a unique and comprehensive skills training program for learning laparoscopy. Students on this training path are guided from the simplest exercises all the way to the most advanced suturing techniques, complex instrument movements, and techniques. By breaking down each complex skill into separate exercises and by steadily increasing the difficulty, this program aims to make the steep learning curve easier for the trainee. Laparo Training Program is almost 60 exercises divided into 4 levels and additional procedures.

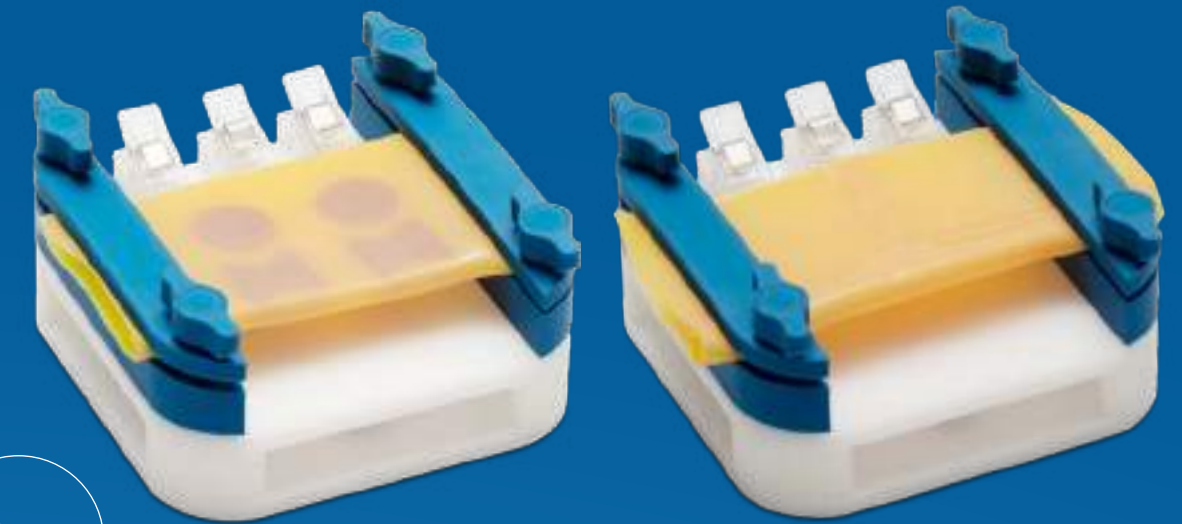
① BASIC SKILLS - 14 TASKS Point No.15

- This course walks the trainee through exercises which are focused on developing entry-level instrument handling skills.



② BASIC SUTURING - 11 TASKS Point No.15

- This course takes place entirely on the Suturing Module. It splits up suturing skills into easier-to-learn sub-skills.

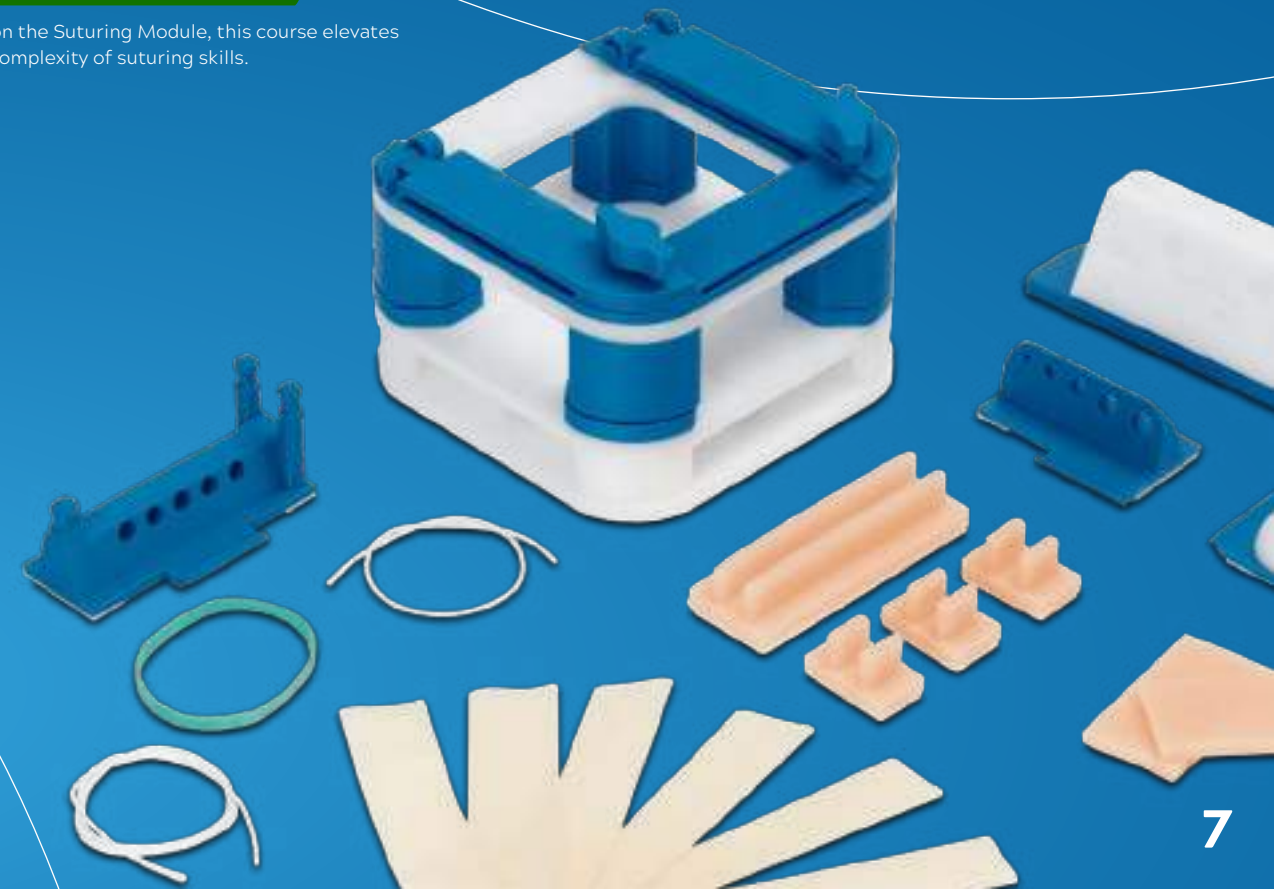


③ INTERMEDIATE - 9 TASKS Point No 15

- These exercises take place mostly on the Dissection Module and rely heavily on consumable silicone inserts which simulate the properties of real-life tissue.

④ ADVANCED SUTURING - 12 TASKS Point No. 15

- Also taking place on the Suturing Module, this course elevates the difficulty and complexity of suturing skills.



APEX vs APEX PRO



	LAPARO APEX		LAPARO APEX PRO
Point No. 14	Manual Skills Training	YES - real-module training	YES - real-module training
	General Surgery Training	YES - real-module + VR training	YES - real-module + VR training
Point No. 14	Pediatric Surgery Training	NO	YES - real-module + VR training
Point No. 18	VR training	3 VR procedures are included in standard configuration	3 VR procedures are included in standard configuration
	Physical Training on modules	Basic and advanced manual skills Basic and advanced suturing Procedural training: Appendectomy, Cholecystectomy, Gynecology, Prostatectomy	Basic and advanced manual skills Basic and advanced suturing Procedural training: Appendectomy, Cholecystectomy, Gynecology, Prostatectomy Procedural pediatric training - Pyloromyotomy, Pyeloplasty, Thoracoscopic repair of esophageal atresia
	Reduced working area for pediatric use with 4,25 cm distance between trocars	NO	YES
Point No. 11	Laparoscope	Full size simulated laparoscope with electronically adjustable camera	2 real laparoscopes - 0° and 30°
Point No. 9	Real endoscope light source	NO	YES, optical fibre connected to laparoscope, LED light source
Point No. 9	"Possibility to rotate the optics relative to camera"	NO	YES
Point No. 10	Possibility to work with camera assistant	YES	YES - assist uses the camera as during a surgical procedure (optics rotation function relative to the camera)
Point No. 5	Trocars	Dedicated separately to camera and instruments	Universal, camera and instruments use the same trocars
Point No. 8	Ports	8	15
Point No. 6,7,22	Real clinical instruments with embedded sensors	YES - Ø 5mm	YES - Ø 5mm, Ø 3mm
Point No. 6			14 pcs.
Point No. 6	Available training modules	11 pcs. Universal Holder + Cutting Circles · Dexterity · Tension · Suturing · Dissection 3in1 · Cholecystectomy · Appendectomy · Prostatectomy · Ovarian Cyst Removal · Myomectomy · Vaginal Cuff Repair	Universal Holder + Cutting Circles · Dexterity · Tension · Suturing · Dissection 3in1 · Cholecystectomy · Appendectomy · Prostatectomy · Ovarian Cyst Removal · Myomectomy · Vaginal Cuff Repair · Pediatric Pyloromyotomy · Pediatric Pyeloplasty · Thoracoscopic repair of esophageal atresia
Point No. 20	2 button footswitch for electrosurgery	YES	YES
Point No. 28	Monitor	27" touchscreen with movable arm and additional keyboard	27" touchscreen with movable arm and additional keyboard
Point No. 13	Wheels with blockade	YES	YES
Point No. 2,17,24	Training analysis	YES - Manual and VR	YES - Manual and VR
Point No. 2,25,24	Automatic assessment	YES	YES
Point No. 2,25,24	Real time analysis	YES	YES
Point No. 26	Multi-work (network)	YES	YES
Point No. 27	Learning curve tracking	YES	YES
Point No. 26, 27	Custom training creator with tutorials	YES	YES
Point No. 26, 27	Possibility of data export	YES	YES
	Device size	170-195 cm x 123 cm x 66 cm	166-216 cm x 125 cm x 62 cm
	Device weight	90 kg	115 kg

APEX PRO

PEDIATRIC

The future of surgical training

Point No. 1

Laparo Apex PRO is the most advanced hybrid simulator for laparoscopic training, offering a unique combination of virtual reality and physical module training. It is the first laparoscopic simulator in the world that is dedicated also to training in pediatric surgery, providing a great opportunity for trainees to gain valuable experience and expertise in this challenging field. Ideal for medical institutions seeking to enhance their surgical training programs, Laparo Apex PRO is the ultimate solution for a superior surgical training experience.

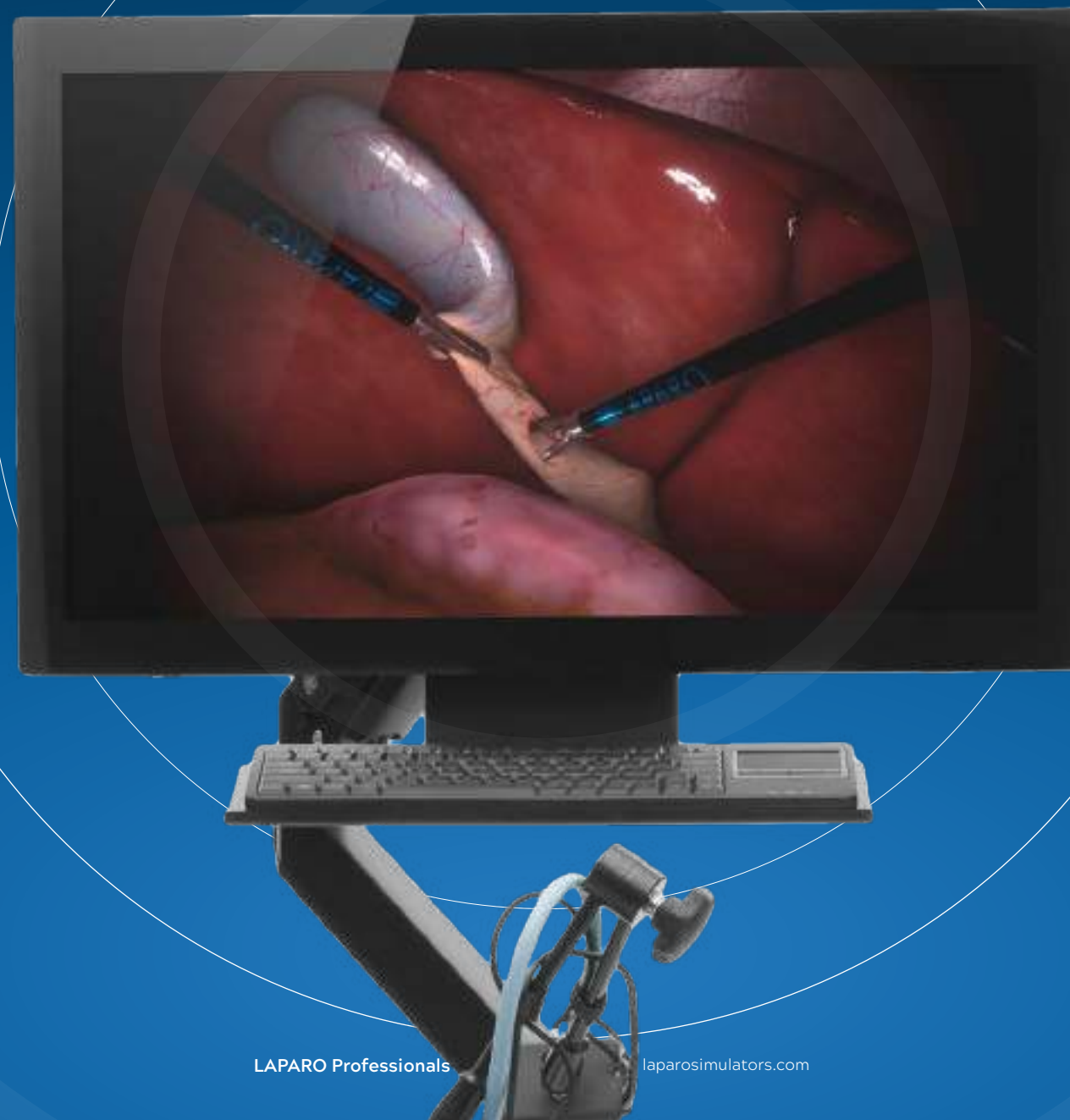
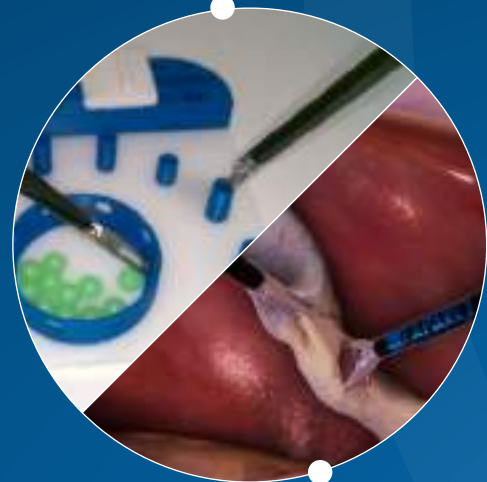


Revolutionize your laparoscopic training

Point No. 1, 21, 24, 25, 26, 27,

Achieve surgical excellence

- Complete training curriculum -from beginner manual skills to advanced procedures
- Realistic touch feedback between instruments in virtual reality
- Custom training creator
- No subscription fees and lifelong software support
- Real-time feedback during simulations, allowing trainees to adjust and improve their skills on the spot



Pediatric surgery

The only laparoscopic simulator on the market that offers dedicated pediatric surgery training modules, providing a comprehensive training solution of laparoscopic procedures on children.

- Pediatric training program (Virtual + Real)
- 3 pediatric ports with reduced distance of 4.5 cm
- Trocars adapted to work also with 3 mm instruments
- Set of pediatric instruments
- 5 mm diameter real pediatric laparoscope



2-in-1 training

Laparo Apex PRO offers both virtual reality and physical module-based training, providing a realistic surgical experience that closely mimics real-life operations.

Experience the realistic laparoscopic surgery training



Real laparoscopes

Standard set includes two real laparoscopes 0° and 30°, providing a more realistic training experience.

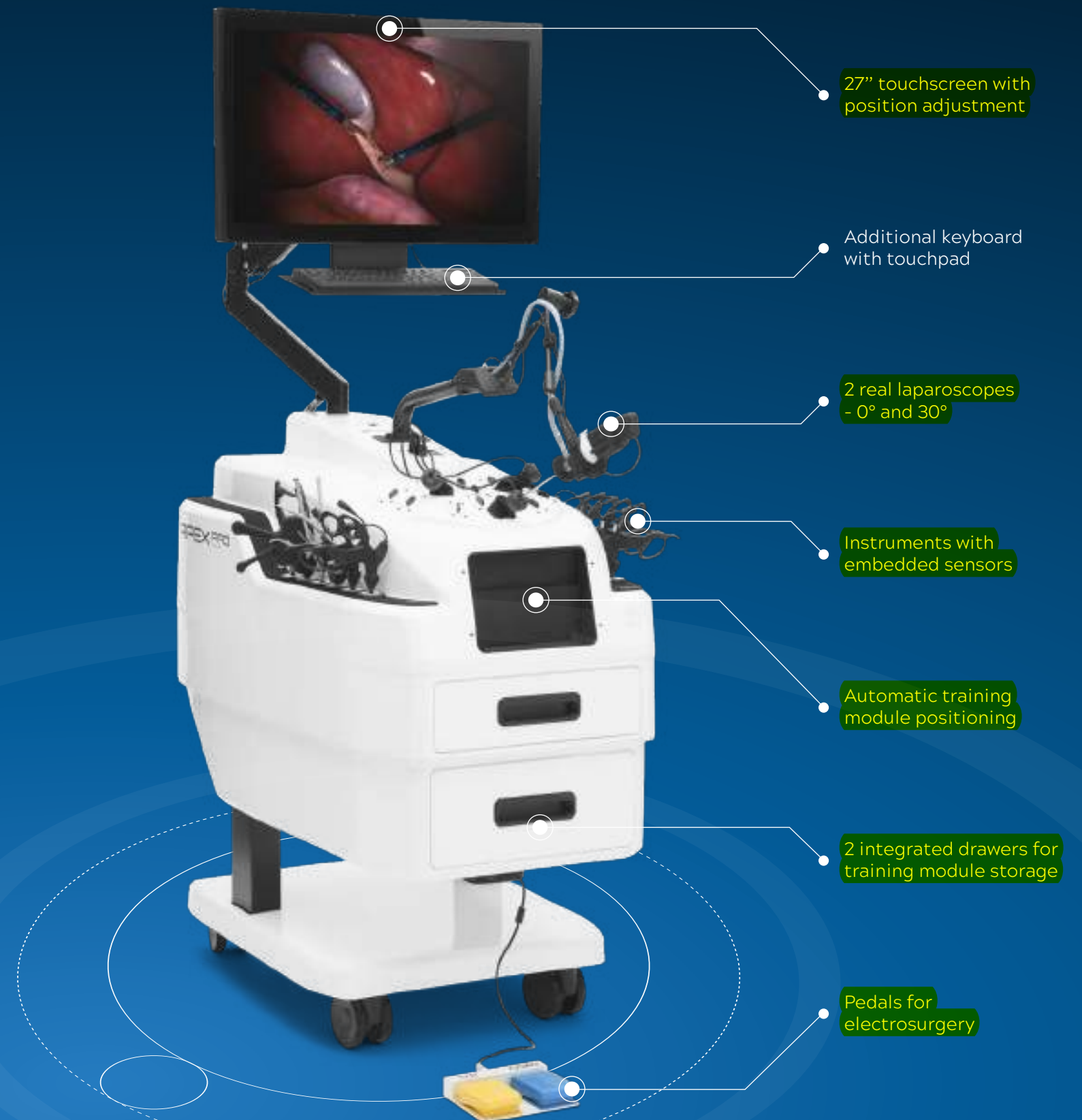


Real clinical instruments

Unlike other laparoscopic simulators that use artificial haptic feedback, Laparo Apex PRO uses real clinical instruments of 3 and 5 mm, providing a more realistic touch feedback between instruments in virtual reality.

Customization

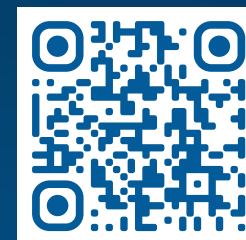
Laparo Apex PRO can be tailored to specific training requirements, encompassing a broad range of general and pediatric surgical procedures. With wide range of training modules and virtual procedures, trainees can benefit from a comprehensive training experience that is aligned with their training objectives.



Achieve surgical excellence

PARAMETERS

Device size	170-195 cm x 123 cm x 66 cm
Device weight	115 kg
Guarantee	2 years
EAN	5904024553106



Point No. 22,to 27

Comprehensive training curriculum

Complete training program, covering a wide range of laparoscopic procedures for both adults and pediatrics. This includes a Laparo Training Program that ranges from beginner manual skills to advanced procedures.

Point No.21,22,23,24

Real-time feedback

Real-time feedback during simulations allows improving their skills quickly. This feature is helpful for novice surgeons, who can learn from their mistakes and enhance their technique in a safe and controlled environment.

Custom training scenarios

Apex PRO offers a unique custom training feature, allowing users to record their own tutorials and set parameters to fit their specific teaching needs. This is an excellent option for teachers who want to create a personalized training experience for their trainees.

Lifelong software support and free application updates

Laparo offers lifelong software support and free application updates, providing access to the latest features without any subscription fees.



VIRTUAL PROCEDURES PORTFOLIO

VIRTUAL PROCEDURES



CHOLECYSTECTOMY



APPENDECTOMY



PROSTATECTOMY



HYSTERECTOMY



NEPHRECTOMY

PEDIATRIC VIRTUAL PROCEDURES



ESOPHAGEAL ATRESIA



PYELOPLASTY



PYLOROMYOTOMY

UNDER DEVELOPMENT

- LOBECTOMY
- SIGMOIDECTOMY
- HEMICOLECTOMY
- SPLENECTOMY
- GASTRIC BYPASS
- INCISIONAL HERNIA
- INGUINAL HERNIA
- NISSEN FUNDOPLICATION

Point No. 18



LAPARO Professionals

ACCESSORIES

PEDIATRICS

Point No. 14

1 PYLOROMYOTOMY

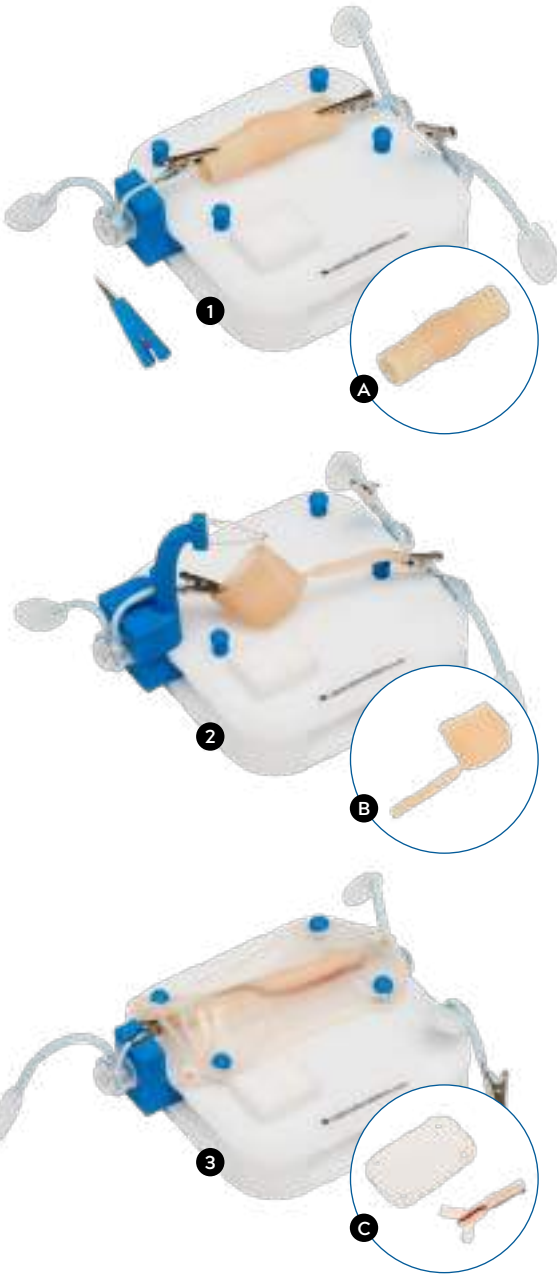
The Pyloromyotomy training module enables the practice of the surgical procedure involving the cutting of the pyloric muscle to widen its lumen. Designed for training in treating pyloric stenosis, the module provides a realistic replica of the gastric pylorus, including a two-layered muscularis and mucosa. It also simulates muscular hypertrophy, a common developmental anomaly. The Pyloric knife is included as part of the module set.

2 PYELOPLASTY

The Pyeloplasty training module offers a realistic simulation of excising the narrowed segment of the ureter and re-suturing it to the renal pelvis. This laparoscopic procedure is performed to treat hydronephrosis caused by narrowing at the junction of the ureter and renal pelvis. The silicone module accurately replicates the renal pelvis with hydronephrosis and includes a 5mm-long ureteral stenosis followed by a patent ureter, allowing trainees to practice the specific steps involved in the Pyeloplasty procedure.

3 ESOPHAGEAL ATRESIA

The Esophageal Atresia training module provides a realistic laparoscopic simulation of this condition in infants. It features a silicone model that accurately replicates the pediatric trachea, upper and lower esophagus, and includes a simulated azygos vein. The silicone material mimics the connective tissue that needs to be dissected to access the esophagus and trachea. Surgeons can practice closing the abnormal connection (fistula) between the esophagus and trachea and suturing the upper and lower parts of the esophagus together.



	Compatibility	EAN	Dimensions	Weight	Guarantee
1,2,3	APEX PRO SET	5904024555391	7 x 10 x 10 cm	0,8 kg	2 years
1	APEX PRO	5904024555360	7 x 10 x 10 cm	0,5 kg	2 years
2	APEX PRO	5904024555346	7 x 10 x 10 cm	0,4 kg	2 years
3	APEX PRO	5904024555353	7 x 10 x 10 cm	0,5 kg	2 years
A	Pyloromyotomy	n/a	1,5 x 6 x 1,5	0,2 kg	2 years
B	Pyeloplasty	n/a	1 x 7 x 2,5 cm	0,1 kg	2 years
C	Espoghael	n/a	1 x 6 x 10 cm	0,2 kg	2 years

DISSECTION

3 IN 1

Dissection Training Module allows for 3 different types of training:

- 1

Dissection Module

a) Vessel dissection module is a disposable, replaceable pad that imitates blood vessels in the surrounding tissues. The task is to separate the vessels from the adjacent tissue, thanks to which the practitioner can learn to carefully prepare delicate structures.

b) Tissue Dissection Module is a removable, disposable pad that imitates human tissue. The task is to identify and separate different types of tissue, for example, nodules or adhesions.

- 2

The Clip Application Module, applying clips is one of the most important laparoscopy skills, which is why it is worth training systematically. The module features custom-designed and produced artificial blood vessels which are suspended between supports. This allows simulating the clipping of these vessels and then cutting them. The blood vessels are pieces of sealed plastic tubing that contain red dye that simulates blood. When the clamp is applied properly the blood recedes allowing us to check the clamp quality.

- 3

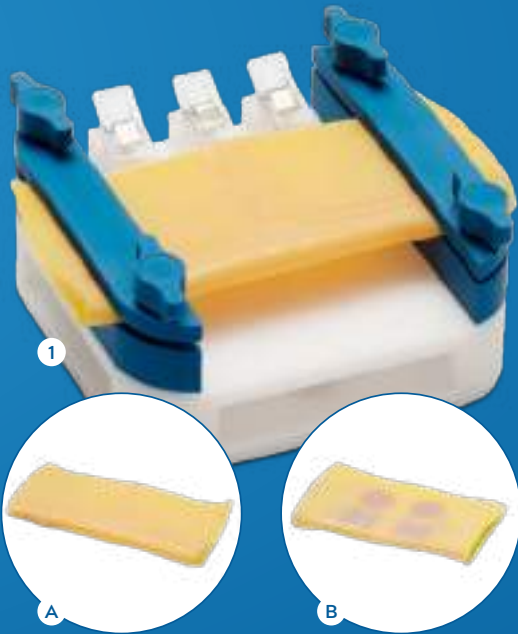
FLS Compatible Module 1, allows you to prepare for one of the tasks on the FLS exam. It allows you to learn how to precisely locate and tighten the loops

- Type of exercise:

- precise handling of instruments
 - using tools on materials imitating real tissues
 - sense of delicate structures
- Recommended instruments:

- Dissector
 - Grasper
 - Scissors
 - Clip Applicator

	Compatibility	EAN	Dimensions	Weight	Guarantee
1,2,3	ADVANCE/ANALYTIC	5904024555261	3 x 10 x 10 cm	0,1 kg	2 years
	APEX/APEX PRO	5904024555414	3 x 10 x 10 cm	0,1 kg	2 years
A	n/a	5904024555704	1 x 6 x 10 cm	0,05 kg	2 years
B	n/a	5904024555711	1 x 6 x 10 cm	0,05 kg	2 years



DEXTERITY

The set includes silicone balls, cones and a lid which can be attached for some exercises. The Module was designed to teach basic skills such as handling and manipulating with instruments, skills which are crucial in developing the basic ability to perform more advanced exercises and procedures. The Dexterity Module allows performing many different exercises, including moving balls, cones, pronation and direction.

- What is practiced

- instrument control (together and separately)
 - precision and a depth perception
 - dexterity in transferring small and light elements between instruments
- Recommended instruments

- Grasper
 - Dissector
- 2 in 1

Compatibility	EAN	Dimensions	Weight	Guarantee
ADVANCE/ANALYTIC	5904024555216	3 x 10 x 10 cm	0,1 kg	2 years
APEX/APEX PRO	5904024555445	3 x 10 x 10 cm	0,1 kg	2 years



TENSION

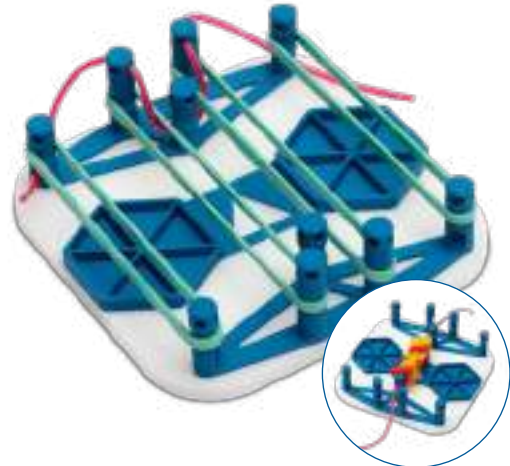
This module allows exercises which focus on teaching how to manipulate elastic components inside the operating area. It is made up of a base with magnets and ABS material as well as exercise components - silicone triangles, a set of Rubber Bands and twine. The Tension Module allows the practice of many different types of exercises including arranging elastic elements, drawing-through twine and building a tower.

- What is practiced

- a sense of flexibility
 - tool control
 - moving objects from hand to hand
 - spatial perception
 - string manipulation
 - precision in guiding the tools
- Recommended instruments

- Dissector
 - Grasper
- 3 in 1

Compatibility	EAN	Dimensions	Weight	Guarantee
ADVANCE/ANALYTIC	5904024555223	2 x 10 x 10 cm	0,1 kg	2 years
APEX/APEX PRO	5904024555421	2 x 10 x 10 cm	0,1 kg	2 years



RUBBER BANDS

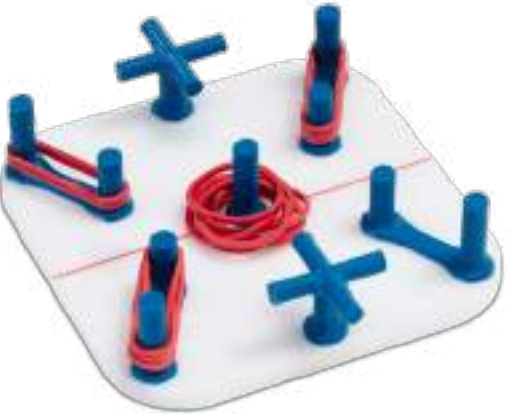
The Rubber Bands Module is perfect for training manual skills with the use of laparoscopic instruments. Training on different shapes of pins helps to improve manual skills at various angles and in many configurations and symmetric use of both hands. The module consists of a base, plastic pins attached to it, and a set of Rubber Bands.

- What is practiced

- depth perception
 - understanding how the tension force exerted on instruments by elastic tissues works
 - practicing two-handed and alternating use of tools
- Recommended instruments

- Dissectors

EAN	Dimensions	Weight	Guarantee
5904024555162	3 x 10 x 10 cm	0,1 kg	2 years

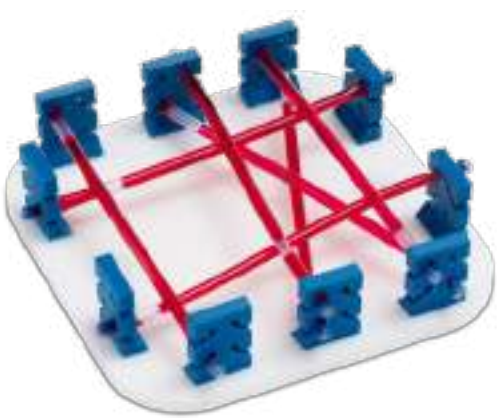


CLIP APPLICATION...

The module features custom-designed and produced artificial blood vessels which are suspended between supports. This allows simulating the clipping of these vessels and then cutting them. The blood vessels are pieces of sealed plastic tubing that contain a red dye that simulates blood. When the clamp is applied properly the blood recedes allowing us to check the clamp quality.

- What is practiced
 - simulation of clamping blood vessels
 - trimming the pinched blood vessels
- Recommended instruments
 - Clip Applicator
 - Scissors

EAN	Dimensions	Weight	Guarantee
5904024555025	3 x 10 x 10 cm	0,1 kg	2 years

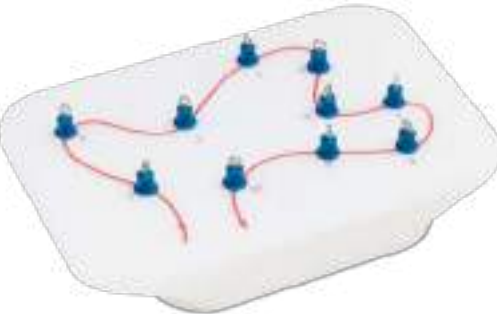


E-BLUS COMPATIBLE...

E-BLUS Compatible 1 module allows you to prepare for one of the tasks on the E-BLUS exam. It consists of a plastic base and numbered metal rings. The exercise aims to work out the same precision in both hands. In addition, the module allows you to learn to maneuver the needle in a small space and at different angles.

- Exam task
 - guide the needle through the 10 rings in a fixed sequence and in the direction marked on the module
 - the needle must always be held in a needle holder during the task
- Recommended instruments
 - 2 Needle Holders

Compatibility	EAN	Dimensions	Weight	Guarantee
ADVANCE/ANALYTIC	5904024555070	3,7 x 10 x 15 cm	0,1 kg	2 years
APEX/APEX PRO	5904024555490	3,7 x 10 x 15 cm	0,1 kg	2 years

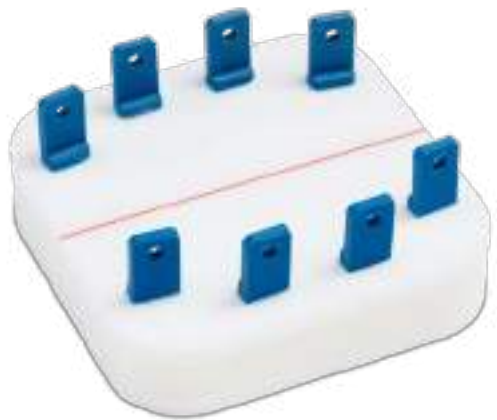


NEEDLE GUIDANCE...

The Needle Guidance module consists of a plastic base and 8 plastic elements with a small hole. Training with this module can be divided into two stages with different levels of difficulty - training with a thread and with a needle and thread.

- What is practiced
 - symmetrical work with two instruments
 - improving depth perception
- Recommended instruments
 - for the variant with a thread: Grasper and Dissector
 - for the variant with a needle and thread: Needle Holder and Grasper

EAN	Dimensions	Weight	Guarantee
5904024555148	3 x 10 x 10 cm	0,1 kg	2 years



THREADING...

In this training module skills in cooperation between instruments and control can be practiced. A complex array of 3D printed elements of variable shapes is attached to the tray and a rubber rope must be guided between them.

- What is practiced
 - symmetrical work with two instruments
 - depth perception
- Recommended instruments
 - Grasper
 - Dissector

EAN	Dimensions	Weight	Guarantee
5904024555179	3 x 10 x 10 cm	0,1 kg	2 years

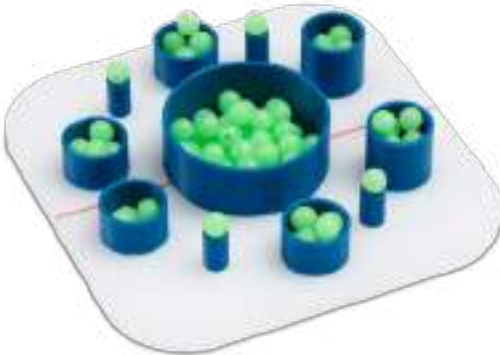


MARBLES...

The Marbles training module consists of one large and six medium cylinders, four pins, and many small balls. The task is to grab and transfer the balls to the right places on the module.

- What is practiced
 - instrument manipulation: grabbing, lowering
 - depth perception
- Recommended instruments
 - Grasper
 - Dissector

EAN	Dimensions	Weight	Guarantee
5904024555131	2 x 10 x 10 cm	0,1 kg	2 years



CONES...

The cones training module consists of a base with a permanently attached container for training cones and four modules with holes as well as plastic cones. The task is to grab the cone and turn it in such a way as to place it in the appropriate hole.

- What is practiced
 - turning the tip of the instrument
 - depth perception
 - cooperation between tools
- Recommended instruments
 - Grasper
 - Dissector

EAN	Dimensions	Weight	Guarantee
5904024555032	2 x 10 x 10 cm	0,1 kg	2 years



HOLDER WITH ADJUSTABLE ANGLE ...

The Holder with Adjustable Angle allows mounting any LAPARO training module at different angles to diversify the training and increase its difficulty. It is made of resistant material, which makes it durable and very easy to clean - just wipe it with a damp cloth. The training module is equipped with magnets attached to the trainer and magnets that allow for stable placement of the appropriate pad on the holder.

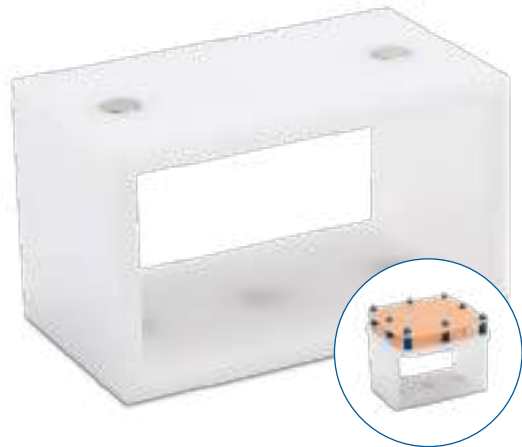
EAN	Dimensions	Weight	Guarantee
5904024555117	2 x 10 x 15 cm	0,3 kg	2 years



PLATFORM ..

Due to the specificity of laparoscopic procedures, access is often very limited and the field of view narrowed. Thanks to the platform module, it is possible to diversify and increase the level of difficulty of exercises performed on the trainer by adding height. Installation is easy. The selected training module is attached to the platform with magnets. Similarly, the platform with a particular pad is placed in the simulator.

EAN	Dimensions	Weight	Guarantee
5904024555124	6 x 6 x 10 cm	0,2 kg	2 years



UNIVERSAL HOLDER ...

The Universal Holder Module has been designed for training on non-standard materials. It is made up of a base, low walls, and four adjustable and durable Rubber Bands with clips. Thanks to the elasticity of the bands, it is possible to successfully perform work training on tight tissues.

It can be used with Laparo modules: suturing, cutting circles, intestine or anastomosis, and with any other organic matter (e.g. banana, chicken leg, etc.) during the training.

Compatibility	EAN	Dimensions	Weight	Guarantee
ADVANCE/ANALYTIC	5904024555186	3 x 16 x 16 cm	0,1 kg	2 years
APEX/APEX PRO	5904024555407	3 x 16 x 16 cm	0,1 kg	2 years



ANASTOMOSIS (2 UNITS) ...

The module consists of two silicone caps imitating real human tissue. It's easy to keep clean - just wash it with clean water and let it dry.

- What is practiced
 - cutting and suturing tissues
 - work on tissues under tension
- Recommended instruments
 - Needle Holder
 - Scissors
 - Grasper / Dissector
- Recommended add-on module (for laparoscopic trainers)
 - Universal Holder
 - Cuvette

EAN	Dimensions	Weight	Guarantee
5904024555001	1 x 4 x 6 cm	0,1 kg	2 years



ARTIFICIAL SKIN (3 LAYERS) ○

The artificial skin module is a replaceable element of the Laparo Adept Trainer - Surgical Skills. The structure imitates real-life anatomical layers: the epidermis, dermis, and subcutaneous tissue. It is reusable so a large number of training exercises can be executed before replacement is necessary. The module is easy to clean, in case of dirt or dust, it is enough to wash it under running water.

- To start training simply place the pad in the right place in the Laparo Adept trainer and make incisions in the skin according to your preferences and start practicing.
- When installed into the Adept the skin spreads, much as it does in reality. This makes it more difficult to place sutures.

EAN	Dimensions	Weight	Guarantee
5904024555308	1 x 12 x 15 cm	0,1 kg	2 years



BOWEL (2 UNITS) ...

The Bowel Training module features a specialized tube which imitates the texture and feel of an intestine. Anastomosis that shape is one of the most challenging exercises in training and learning the suturing skills in laparoscopy.

- What is practiced
 - anastomosis techniques
 - cutting and suturing under tension
- Recommended instruments
 - Needle Holder
 - Grasper
- Recommended add-on module (for laparoscopic trainers)
 - Universal Holder

EAN	Dimensions	Weight	Guarantee
5904024555018	1 x 2 x 15 cm	0,1 kg	2 years



FLS COMPATIBLE SET

- 4 Training Modules
 - FLS Compatible 1
 - FLS Compatible 2
 - FLS Compatible 3
 - Universal Holder
 - Cutting Circles (5 Pads)
 - Replaceable For FLS Compatible 1 x 2
 - Replaceable For FLS Compatible 2 x 2
- Suturing Kit x 2

Compatibility	EAN	Weight	Guarantee
ADVANCE/ANALYTIC	5904024556015	0,5 kg	2 years
APEX/APEX PRO	5904024555582	0,5 kg	2 years

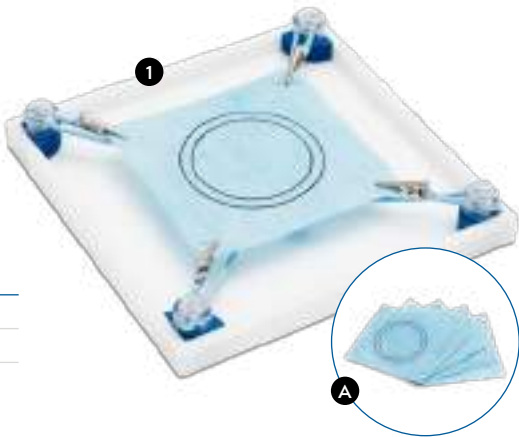


CUTTING CIRCLES

The Cutting Circles module consists of 5 sheets of delicate material with a printed pattern of circles and a universal holder to which the printed pad is attached.

- Exam task
 - E-BLUS: the participant must precisely cut 1 circle within 300 seconds
 - FLS: the participant has to cut 3 circles precisely within 300 seconds
- Recommended instruments
 - Scissors
 - Grasper

Compatibility	EAN	Dimensions	Weight	Guarantee
1 ADVANCE/ANALYTIC	5904024555186	3 x 16 x 16 cm	0,1 kg	2 years
APEX/APEX PRO	5904024555407	3 x 16 x 16 cm	0,1 kg	2 years
A n/a	5904024555049	0,1 x 10 x 10 cm	-	2 years

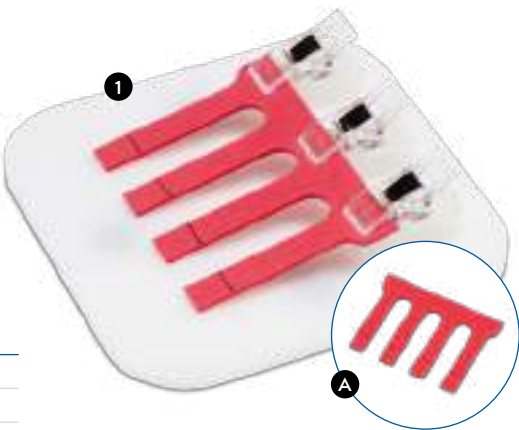


FLS COMPATIBLE 1

The module consists of a base with a clips and a foam insert imitating natural tissues. It allows you to learn how to precisely locate and tighten the loops.

- Exam task
 - putting on the loop and tightening it in the place marked by the black line
 - the loop must be put around the element precisely
 - a one-millimeter difference in the loop position in reference to the black line is allowed
- Recommended instruments
 - Endoloop
 - Grasper/Dissector

Compatibility	EAN	Dimensions	Weight	Guarantee
1 ADVANCE/ANALYTIC	5904024555087	2,5 x 10 x 10 cm	0,1 kg	2 years
APEX/APEX PRO	5904024555506	2,5 x 10 x 10 cm	0,1 kg	2 years
A n/a	5904024555643	0,2 x 7 x 5 cm	-	2 years

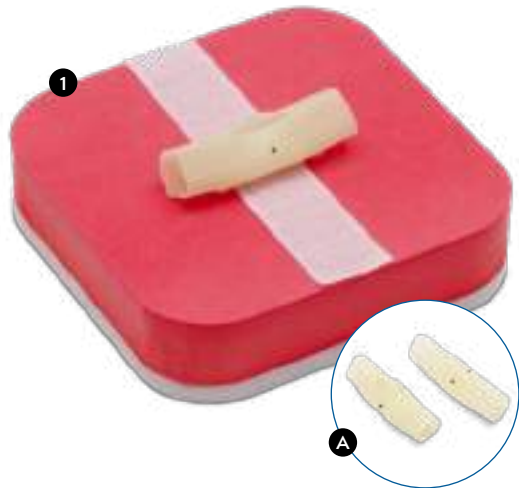


FLS COMPATIBLE 2

This module allows to master the technique of placing intracorporeal and extracorporeal sutures.

- Exam task
 - place a seam in the place marked with dots. If seams are made outside of the trainer, knots need to be tied first and then tighten the wick with the knot pusher. When sewing inside the trainer, the knot should be made with the use of appropriate laparoscopic tools
 - after making the seam, the gap should be closed properly, the knot should not untie
 - 1 mm error in placing the seam is allowed relative to the marking
- Recommended instruments
 - Needle Holder
 - Dissector/Grasper
 - Knot Pusher

Compatibility	EAN	Dimensions	Weight	Guarantee
1 ADVANCE/ANALYTIC	5904024555094	2,5 x 10 x 10 cm	0,1 kg	2 years
APEX/APEX PRO	5904024555513	2,5 x 10 x 10 cm	0,1 kg	2 years
A n/a	5904024555650	2 x 2 x 7 cm	-	2 years

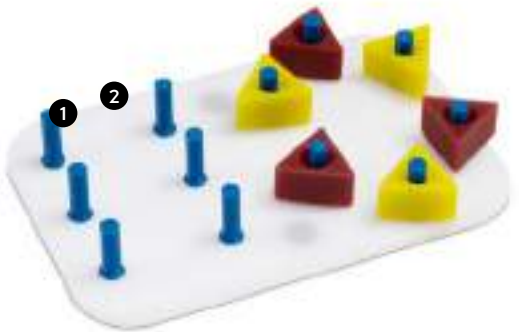


FLS COMPATIBLE 3

It helps to develop the skills of grasping and moving instruments in both hands with the same precision.

- Exam task
 - moving elements from one place to another
 - grabbing the element with one tool, passing to the second tool and putting it back on the given position
 - items must not be moved outside the field of vision or be dropped
- Recommended instruments
 - Dissector
 - Grasper

Compatibility	EAN	Dimensions	Weight	Guarantee
1 ADVANCE/ANALYTIC	5904024555100	2,7 x 10 x 15 cm	0,1 kg	2 years
2 APEX/APEX PRO	5904024555520	2,7 x 10 x 15 cm	0,1 kg	2 years



E-BLUS COMPATIBLE SET

- 4 Training Modules
 - E-BLUS Compatible
 - FLS Compatible 2
 - FLS Compatible 3
 - Universal Holder
 - Cutting Circles Module - 5 pads
 - Replaceable pad for FLS Compatible 2 x 2

Compatibility	EAN	Weight	Guarantee
ADVANCE/ANALYTIC	5904024556008	0,4 kg	2 years
APEX/APEX PRO	5904024555575	0,4 kg	2 years



Instruments

GRASPER

Point No. 6

The grasper is used to safely manipulate delicate abdominal tissue, it is one of the basic instruments used in laparoscopy.

possibility of tip rotation

both movable parts of forceps

strong instrument to hold the tissues

simple handle without ratchet

Name	EAN	Weight	Guarantee
Grasper ANALYTIC 5 mm	5904024554011	0,2 kg	2 years
Grasper APEX 5 mm	5904024554240	0,2 kg	2 years
Grasper APEX PRO 5 mm	5904024554271	0,2 kg	2 years
Grasper APEX PRO 3 mm	5904024554417	0,2 kg	2 years
Grasper 5 mm - black	5904024554240	0,2 kg	2 years
Grasper 3 mm	5904024554318	0,2 kg	2 years
Grasper 5 mm	5904024554523	0,2 kg	2 years

DISSECTOR

The dissector is used for tissue dissection and more precise control during laparoscopic surgery.

both movable parts of forceps

light teeth on forceps surface

possibility of tip rotation

simple handle without ratchet

Name	EAN	Weight	Guarantee
Dissector ANALYTIC 5 mm	5904024554004	0,2 kg	2 years
Dissector APEX 5 mm	5904024554257	0,2 kg	2 years
Dissector APEX PRO 5 mm	5904024554288	0,2 kg	2 years
Dissector APEX PRO 3 mm	5904024554424	0,2 kg	2 years
Dissector 5 mm - black	5904024554516	0,2 kg	2 years
Dissector 3 mm	5904024554301	0,2 kg	2 years
Dissector 5 mm	5904024554509	0,2 kg	2 years

SCISSORS

Laparoscopic scissors are used to cut tissue during surgery. It is one of the most popular instruments used during laparoscopic procedures.

sharp

rotatable tip

simple handle - no ratchet

Name	EAN	Weight	Guarantee
Scissors ANALYTIC 5 mm	5904024554028	0,2 kg	2 years
Scissors APEX 5 mm	5904024554264	0,2 kg	2 years
Scissors APEX PRO 5 mm	5904024554295	0,2 kg	2 years
Scissors APEX PRO 3 mm	5904024554431	0,2 kg	2 years
Scissors 5 mm - black	5904024554554	0,2 kg	2 years
Scissors 3 mm	5904024554301	0,2 kg	2 years
Scissors 5 mm	5904024554547	0,2 kg	2 years

The tools sold by Laparo are for training purposes only and should not be used in real laparoscopic procedures.

LAPARO Accessories

Instruments

NEEDLE HOLDER

The needle holder is used for suturing and holding the needle during laparoscopic procedures.

dedicated to suturing

magnetic tip with light teeth

durable

with ratchet

Name	EAN	Weight	Guarantee
Needle holder 3 mm	5904024554578	0,2 kg	2 years
Needle holder APEX PRO 3 mm	5904024554448	0,2 kg	2 years
Needle holder 5 mm	5904024554332	0,2 kg	2 years
Needle holder APEX 5 mm	5904024554202	0,2 kg	2 years
Needle holder APEX PRO 5 mm	5904024554455	0,2 kg	2 years
Needle holder ANALYTIC 5 mm	5904024554035	0,2 kg	2 years

CLIP APPLICATOR

The Clip Applicator is an instrument for placing surgical clips on tissues during laparoscopic or endoscopic procedures. These clips are used to ligate intra-cavity tissues in laparoscopic surgery. They are single-use and are used with the 5 mm clip applicator.

made of titanium

u-shaped

closed tip of the instrument

durable

made entirely of metal

Name	EAN	Weight	Guarantee
Clip applicator ANALYTIC	5904024554042	0,2 kg	2 years
Clip applicator APEX	5904024554219	0,2 kg	2 years
Clip applicator APEX PRO	5904024554400	0,2 kg	2 years
Clip applicator 5 mm	5904024554585	0,2 kg	2 years

APEX MULTI-TOOLS

Multi-tools imitate the following instruments in virtual procedures

Multi-tool 1: Stapler, Bipolar grasper, Vessel sealer, Ultrasonic scalpel

Multi-tool 2: Hook, Suction-irrigator, pyloric knife

Name	EAN	Weight	Guarantee
Multi-tool 1	5904024554226	0,2 kg	2 years
Multi-tool 2	5904024554233	0,2 kg	2 years

KNOT PUSHER

The Knot Pusher is an instrument designed for moving extracorporeal knots in the abdominal cavity. It greatly facilitates the performance of knot tying during laparoscopic operations.

Name	EAN	Weight	Guarantee
Knot Pusher	5904024554592	0,3 kg	2 years

56

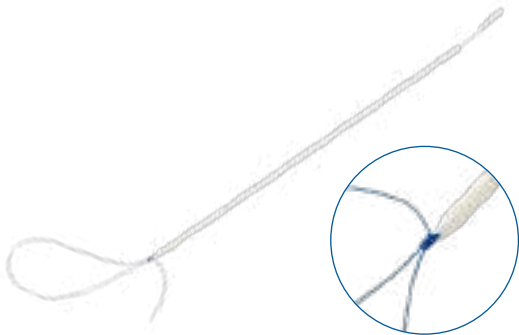
57

ENDOLOOP

Endoloop is used for the ligation of pendicles on tissue during laparoscopic procedures. The instrument is made of a plastic handle and a loop of durable fiber.

- Single-use, disposable
- Snappable plastic end allows tightening the loop to secure the knot

EAN	Dimensions	Weight	Guarantee
5904024554608	0,8 x 0,8 x 50 cm	0,2 kg	2 years



TROCAR 3 MM

The 3mm training trocar is designed and used with the 3mm instruments used in pediatric surgery. With this trocar, 3mm instruments and with our trainers it is possible to train pediatric surgery which, due to the difference in size, further increases the difficulty of laparoscopic surgery.

EAN	Dimensions	Weight	Guarantee
5904024557340	5 x 8,5 x 13,5 cm	0,2 kg	2 years



PACKAGE OF SUTURING KITS (12 UNITS)

12 x Suturing kit includes needles and threads. The package is used in Laparo training modules. A simple suturing kit is recommended for Laparo training modules.

EAN	Dimensions	Weight	Guarantee
1 5904024557043	5 x 10 x 10 cm	0,1 kg	2 years
2 5904024557333	-	0,05 kg	2 years



COVER

A two-layer protective cover prevents the simulator from getting dusty when is not in use. Equipped with a zipper on the back.



Name	EAN	Dimensions	Weight	Guarantee
1 Cover ADVANCE	5904024557364	-	0,6 kg	2 years
2 Cover ANALYTIC	5904024557357	-	0,6 kg	2 years
3 Cover APEX	5904024557418	-	0,6 kg	2 years

BOX

Transport boxes for all products of the PROFESSIONALS Series.

Transport boxes are the perfect solution for securing your equipment while transporting it from place to place. They are made of durable material ensuring safe transport, and thanks to the special reinforcement of the corners, the boxes will work in all conditions. In addition, the interior is equipped with high-density foam to protect the shock-sensitive components from damage

It is possible to make boxes with any logo.

EAN	Dimensions	Weight	Guarantee
5904024557388	137 x 76 x 96 cm	90 kg	2 years





Laparo Medical Simulators

Armii Krajowej 54,
50-541 Wrocław,
Poland, European Union


SALES:

T: +48 571 223 170

E: sales@laparosimulators.com

laparosimulators.com

 [/LaparoPL/](https://www.facebook.com/LaparoPL/)

 [/laparo-simulators/](https://www.linkedin.com/company/laparo-simulators/)

 [/laparomedicalsimulators/](https://www.youtube.com/channel/UC-laparomedicalsimulators/)

 [/laparomedsim/](https://twitter.com/laparomedsim/)

